

CONSULTANCY: HYDROLOGICAL ASSESSMENT OF WETLANDS IN BUA DISTRICT

REQUEST FOR PROPOSALS

Issue date: 13 August 2025

Closing date and time: 27 August 2025

Available budget: USD 30,000

Background

The Wildlife Conservation Society (WCS) is an international non-governmental organization dedicated to partnering with communities, government, and other stakeholders to safeguard Fiji's biodiversity and promote sustainable natural resource management. This is achieved through an integrated land- and seascape approach, grounded in applied research. WCS has been active in Fiji for over two decades.

The Climate Adaptation and Protected Areas (CAPA) Initiative aims to strengthen climate resilience through nature-based solutions. In Fiji, wetland restoration in Bua District will support the revival of *Eleocharis sp.* commonly known in the vernacular as *kuta*, a reed traditionally used by women in Bua to weave mats and wedding garments. Restoring these wetlands can support the revitalisation of kuta weaving among women and offering a climate-resilient alternative livelihood contributing to the reduction of fishing pressure in their *qoliqoli* (customary fishing grounds). Bua District is located in the western part of Vanua Levu. It encompasses several customary marine protected areas and is home to seven customary villages.

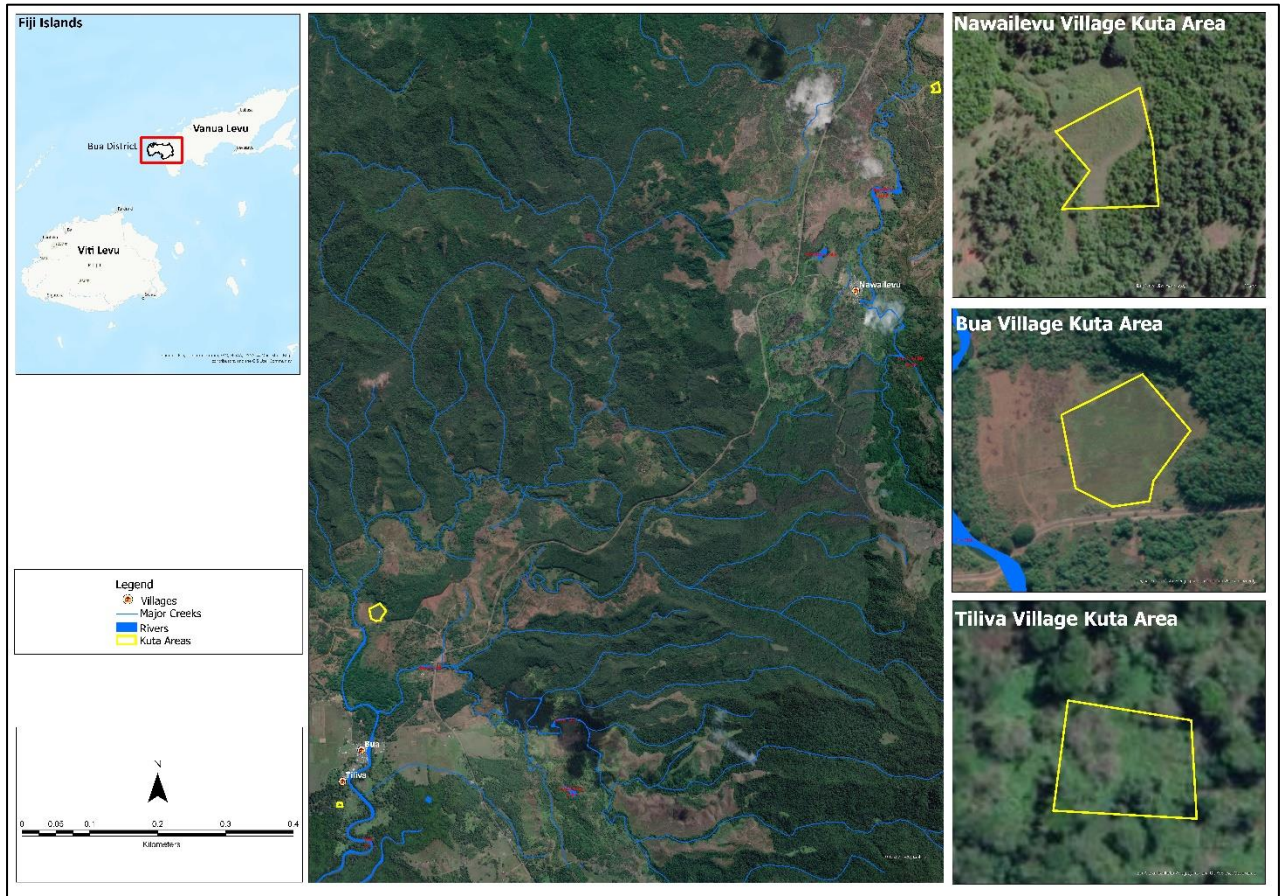
The wetland habitats in Bua that historically supported the growth of kuta have experienced degradation and drying in recent years, resulting in a marked decline in its abundance and production potential. This degradation is likely driven by a combination of factors, including land-use practices altering hydrological flows, sedimentation and changing climate patterns.

Scope of Work

This consultancy will undertake a hydrological assessment of three wetland systems in Bua to identify the underlying causes of wetland desiccation (see below map). The assessment will also provide practical recommendations for the ecological restoration and long-term management of these wetland ecosystems. Specifically, the following tasks will be undertaken:

1. Wetland hydrological assessment: Carry out an on-site hydrological assessment to understand both historical and current water flows into the wetland system. This should also identify key drivers of wetlands degradation associated with sources and patterns of water loss (usage).

2. Assessment report: Develop a comprehensive report outlining the findings of the hydrological assessment, including recommendations for restoring and maintaining wetland health, with a view to *kuta* production. The restoration measures should have a focus on nature-based solutions.



Deliverables and timeline

Deliverable	Timeline (after contract signing)
Inception meeting	7 days
Submission of assessment methodology and workplan	7 days
Site based assessment	14 days
Draft assessment and recommendations report for WCS review	30 days
Final report	45 days

Requirements and qualifications

The consultant will have the following minimum experience and qualifications:

- Advanced degree (M.Sc. or equivalent) in hydrology, water resources engineering/science, or related fields.
- Considerable experience conducting similar work to this consultancy, preferably within the Pacific region.
- Fluency in both spoken and written English.

Submission requirements

The following must be submitted:

1. Brief technical statement outlining previous experience conducting hydrology work related to this consultancy (maximum one page). Proposers are encouraged to submit examples of previous assessment reports they have prepared.
2. CV
3. Financial proposal

Submitted rates are deemed to include all costs, insurances, taxes, fees, expenses, liabilities, obligations, risk and other things necessary for the performance of the requirement. Any charge not stated in the Proposal as being additional, will not be allowed as a charge against any transaction under any resultant contract. All rates and prices submitted by proposers shall be in US dollars.

All proposal documents should be emailed directly to ikoroiwaga@wcs.org by the closing date. Late submissions will not be considered.

Evaluation criteria

The following criteria will be used to evaluate proposals:

Evaluation criteria	Weighting given
Financial proposal	30 %
Technical experience and capacity	60 %
Experience working in a Pacific context	10%